



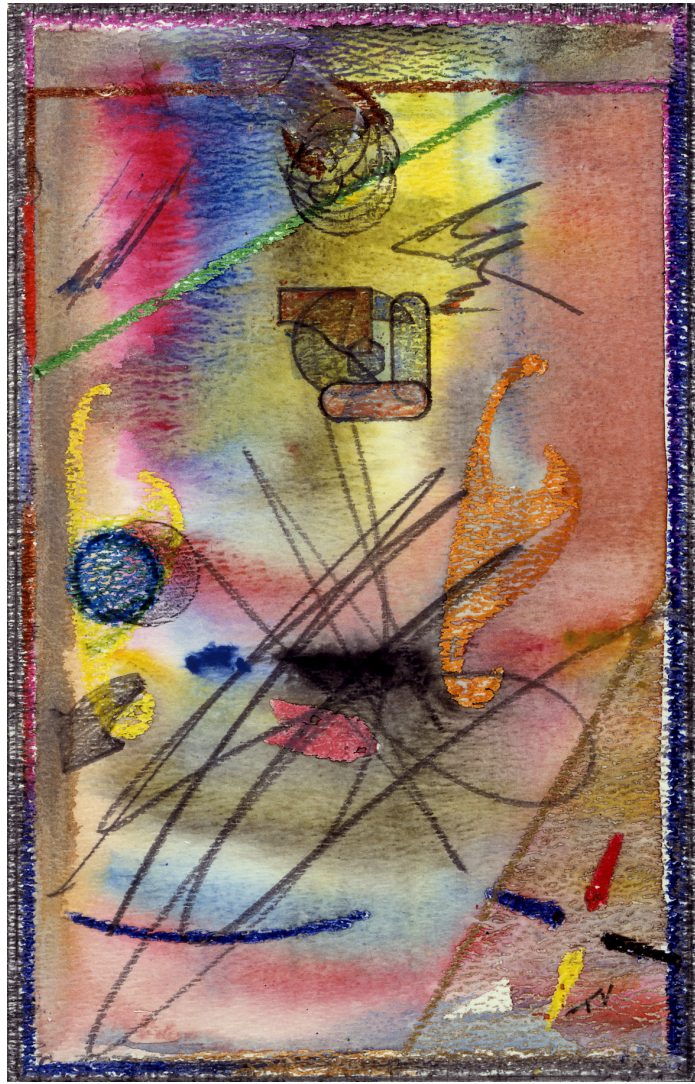
*Tino Villanueva, poet and artist*

It's a great pleasure to discover that a friend has multiple and unexpected talents. Such is the case with Tino Villanueva. In the early 1970s, Tino Villanueva began publishing his poems and he became part of what has been called The Chicano Literary Renaissance. His work highlights the tension as well as the richness of living within two different cultures. He writes in both English and Spanish, occasionally switching between the two languages. In 1972, he published his first volume of verse, *Hay Otra Voz Poems (There Is Another Voice Poems)* which included, "Chicano Is an Act of Defiance."

Tino's best-known work, the book length poem, *Scene From the Movie GIANT* (now in its 4<sup>th</sup> printing), won the 1994 **American Book Award**. The poem was inspired by his boyhood in San Marcos, where he had first viewed the film at a segregated movie theatre. Tino currently serves as Senior Lecturer in Spanish in the Department of Romance Studies at Boston University.

To digress, this editor attended the last evening of an art exhibit at the Pierre Menard Gallery in Cambridge Massachusetts titled, *The Writer's Brush*. We thought it might be interesting to see cartoons drawn by Charles Bukowski. True to form the caption from the first Burkowski's work of art was, "The first thing I do when I get up is barf!" To our astonishment the art of e. e. cummings was wonderful. Also hanging, most prominently, was a series of remarkable works by our own Tino Villanueva. We claim him as our own because he is a certified member of "the bagel bards," that clique of poets and writers that hang out together in Cambridge and Somerville.

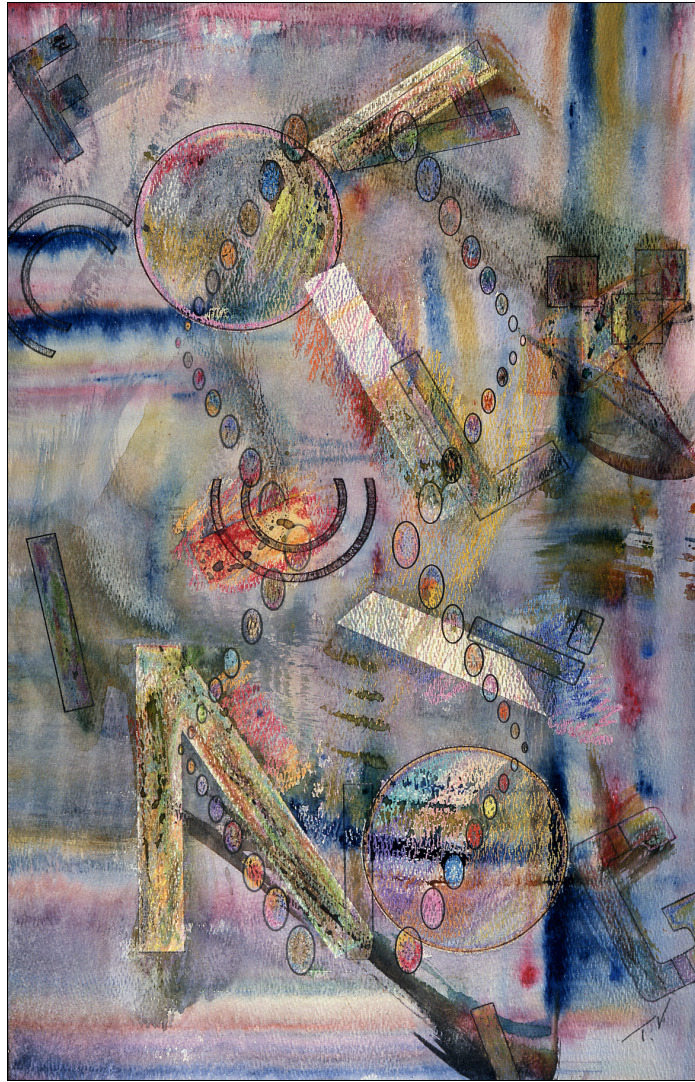
We liked Tino's art so much we asked if we could use his art for cover of the next *Bagel Bard Anthology*. He has graciously allowed us to reproduce some of his art here.



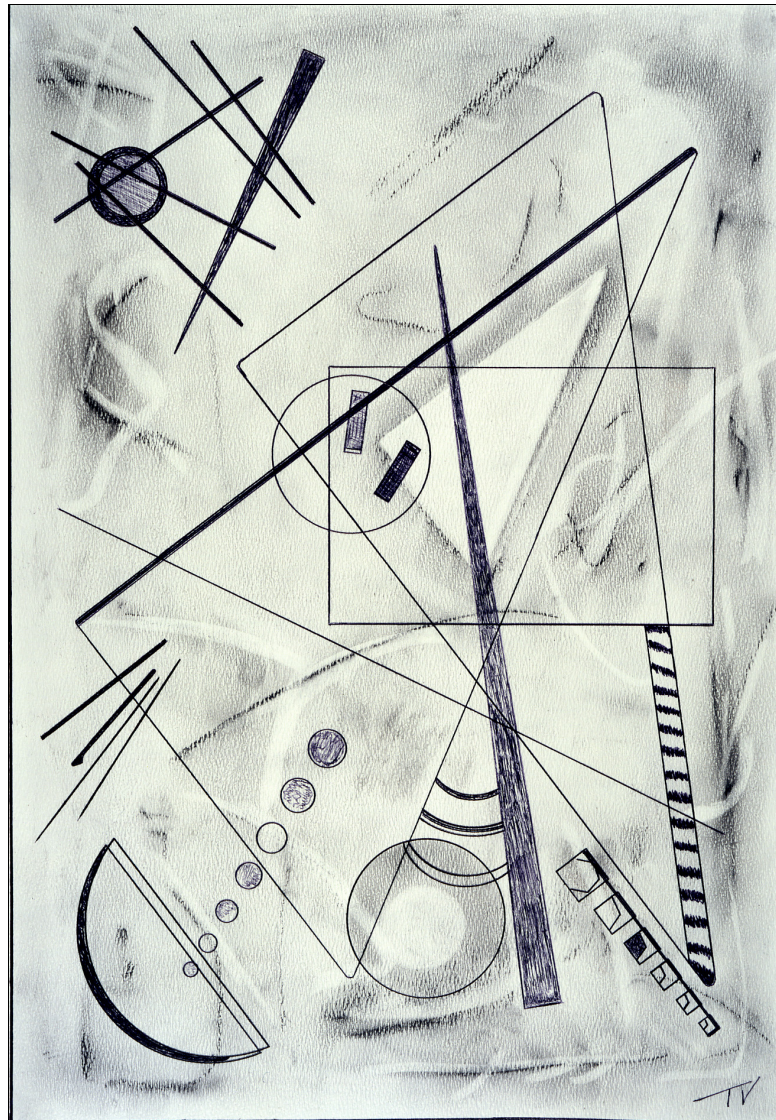
**Flashpoints**, watercolor, crayon and pencil, 1988, 9 1/2" x 6"



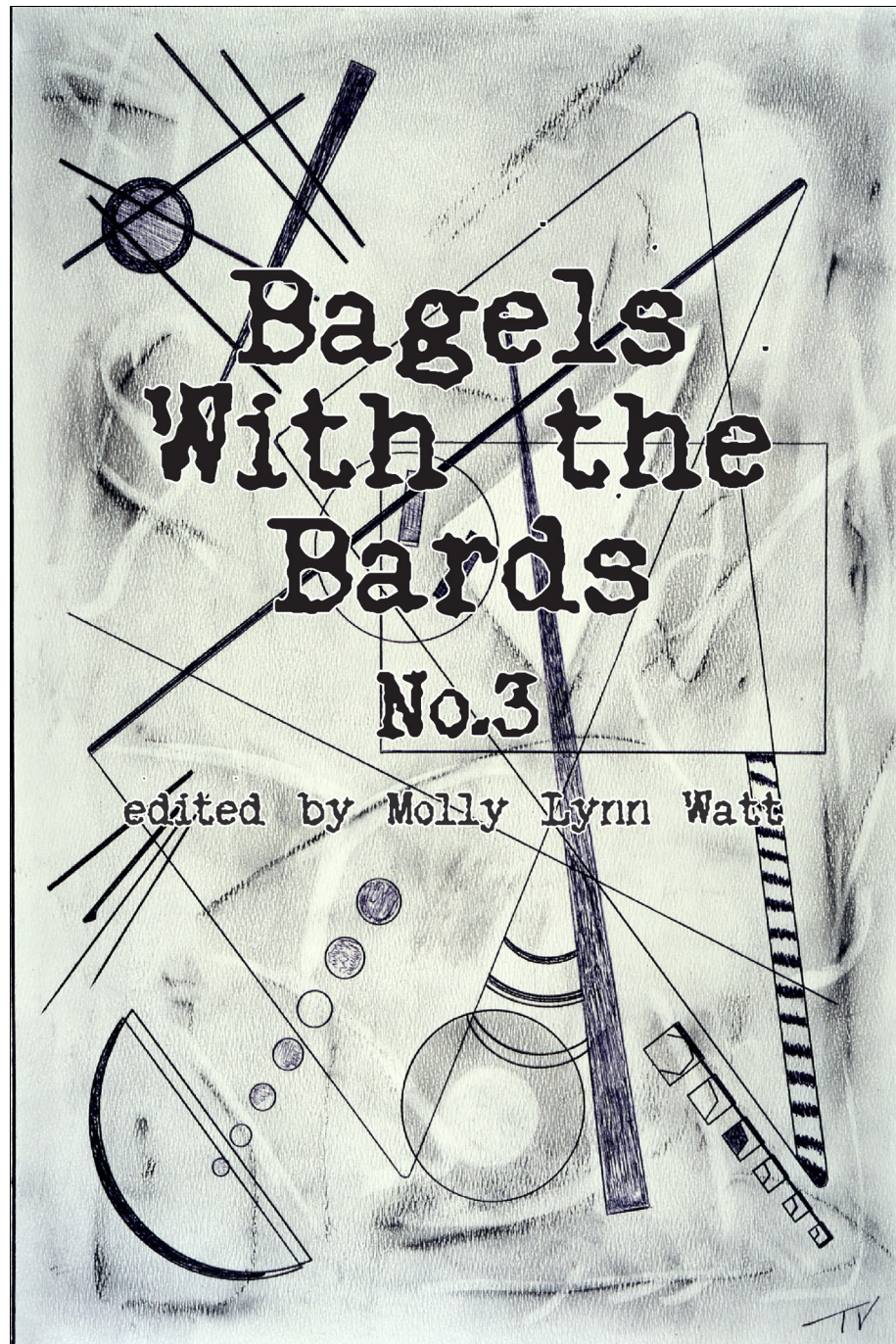
*Looking for Miró, 1987, watercolor and crayon, 10 3/4 " x 8"*



**Falling into Place, 1989, watercolor, crayon, pencil, 18 ¼ " x 11 ¾ "**



**Transparent Dream for K., 2001, ballpoint pen and pastel, 17 ½ " x 12 "**



**Bagels with the Bards #3**